

## **SCOPING/INFORMATION PACKAGE**

### ***Lower Salmon River Boat Ramp Improvements***

Bureau of Land Management Cottonwood Field Office

DOI-BLM-ID-C020-2015-0011-EA

#### **Introduction**

This information package summarizes a Bureau of Land Management (BLM) proposal to renovate seven boat ramps at BLM managed recreation sites along the Lower Salmon River (see attached map). Federal actions such as this one must be analyzed in accordance with the National Environmental Policy Act (NEPA) and other relevant Federal and State laws and regulations to determine potential environmental consequences.

The purpose of this report is to inform interested and affected parties of the proposal and to solicit comments to assist with the NEPA review of the proposal. Analysis of the proposal is ongoing, and will be documented in an Environmental Assessment (EA). Comments received in response to this solicitation will be used to identify potential environmental issues related to the proposed action and to identify alternatives to the proposed action that meet the purpose of and need for the project.

The Bureau of Land Management (BLM) will also use this public participation opportunity under the NEPA to assist the agency in satisfying the public involvement requirements under Section 106 of the National Historic Preservation Act (NHPA) (16 U.S.C. 470(f)) pursuant to 36 CFR 800.2(d)(3). The information about historic and cultural resources within the area potentially affected by the proposed action will assist the BLM in identifying and evaluating impacts to such resources in the context of both NEPA and Section 106 of the NHPA.

The BLM will consult with Indian tribes on a government-to-government basis in accordance with Executive Order 13175 and other policies. Tribal concerns, including impacts on Indian trust assets and potential impacts to cultural resources, will be given due consideration. Federal, State, and local agencies, along with tribes and other stakeholders that may be interested in or affected by the proposed action that the BLM is evaluating, are invited to participate in the scoping process and, if eligible, may request or be requested by the BLM to participate in the development of the environmental analysis as a cooperating agency.

#### **Purpose and Need for Action**

##### **The purpose of the proposed action is:**

To improve boat ramps at BLM recreation sites along the Salmon River to address public safety concerns, decrease user conflicts and congestion, prevent damage to boat trailers, and comply with the Cottonwood Resource Management Plan (RMP – BLM 2009).

**The need:**

Typically both float and motorized boating use occur on the Salmon River year round, with the majority of use during peak floating months of the year for white water boating - June thru September. The rest of the year float and motorized boating use is mainly for fishing. Float boaters make up the vast majority of users, and jet boaters are the most common motorized users. There are commercial and private boaters and both utilize the BLM boat ramps.

Currently, the seven BLM managed boat ramps along the Salmon River do not meet the demand for loading and unloading during the high-use season. Employees of the BLM Cottonwood Field Office have regularly observed congestion, user conflicts, and damage to boat trailers at these ramps. BLM has also had numerous requests by different boating user groups to fix the boat ramps.

Many of the boat ramps do not extend out into the river far enough during low water periods causing both float boat and motorized boat trailers to drop off the end of the boats ramps causing damage to trailer axels and undercarriage. Safety is also a concern for people loading and unloading boats due to the drop off at the end of the ramps and slippery rocks next to the ramps. User conflicts also occur between float boaters who unload boats and gear on the boat ramps and congest the ramps for long periods of time while setting up or tearing down their boat equipment on the ramp. People with both trailers can launch and takeout much quicker, but often must wait for others to clear the ramp. The BLM has tried to educate users and have posted large signs along the boat ramps asking people to not block the boat ramps.

The Cottonwood RMP, Action AR-1.4.2 states that the BLM will “Maintain all recreation facilities and recreation use areas for public safety and aesthetics.”

**Preliminary Issues**

The preliminary issues identified through internal scoping are in regard to potential adverse affect to riparian, fisheries including threatened and endangered species, water quality, and recreational use/displacement during construction.

**Proposed Action and Preliminary Alternatives****Proposed Action:**

The BLM Cottonwood Field Office proposes to renovate 7 boat ramps at BLM managed recreation sites: Hammer Creek, Pine Bar, Short Bar, Old Lucile, Lucile, Slate Creek, and White Bird Gravel Pit (see attached map). The BLM would use either cable concrete blocks or concrete to complete the projects depending on the situation at each ramp and available funding. The work would take place during lower water levels at different times of the year depending on permitting requirements from other agencies and when the recreational use of those ramps are less not during the peak use season..

Specific renovations at each site would be:

Hammer Creek (replace and extend the end of the boat ramp and provide more boater prep areas) Replace the end of the current boat ramp 30 feet out (long) and 26 feet wide and replace up to 36 feet wide and up to 45 feet out (long). Also add on the downstream boat prep area 10 to 15 feet out (long) and up to 60

feet wide and add 20 feet by 60 feet of the upslope side of the current prep area. Also add another upstream boat prep area 60 feet long and 60 feet wide.

Pine Bar (widen the boat ramp and extend the end of the boat ramp) Build another lane for the boat ramp up to 20 feet wide and up to 120 feet long including stem walks on the sides of the ramp. Also extend the current ramp another 5 to 15 feet out (long) and up to 24 feet wide.

Short Bar (extend the boat ramp) Extend the ramp out 5 to 15 feet out (long) and up to 47 feet wide.

Old Lucile (extend the boat ramp) Extend the ramp out 5 to 15 feet out (long) and up to 30 feet wide. Add upstream and downstream concrete prep area each 20 feet out (long) and 30 feet wide.

Lucile (extend the boat ramp) Extend the ramp out 5 to 15 feet out (long) and up to 40 feet wide. Also extend the boat prep area out 10 to 20 feet out (long) and up to 50 feet wide.

Slate Creek (replace the boat ramp) up to 18 feet wide and up to 140 feet out (long).

White Bird Gravel Pit (extend and widen the boat ramp) Extend the current ramp out 5 to 15 feet out (long) and up to 26 feet wide, also widen the ramp 18 feet wide and up to 140 feet long.

**No Action Alternative:** The BLM would not improve any of the existing boat ramps.

### **Public Input Needed**

Comments are specifically requested on the proposed action, preliminary issues, and alternatives.

Comments made on this proposal would be most helpful if they are received by October 11, 2015 and are directly relevant to the proposal and project area. The BLM will not reject public feedback outside established public involvement timeframes; however, these comments may be considered secondary to comments received in a timely manner and may only be assessed to determine if they identify concerns that would substantially alter the assumptions, proposal, design, or analysis presented in the EA.

Comments sent electronically should be sent to [blm\\_id\\_lsrbatrampimprovements@blm.gov](mailto:blm_id_lsrbatrampimprovements@blm.gov). Please identify whether you are submitting comments as an individual or as the designated spokesperson on behalf of an organization.

*Before including your address, phone number, e-mail address, or other personal identifying information in your comment, be advised that your entire comment – including your personal identifying information – may be made publicly available at any time. While you can ask us in your comment to withhold from public review your personal identifying information, we cannot guarantee that we will be able to do so.*

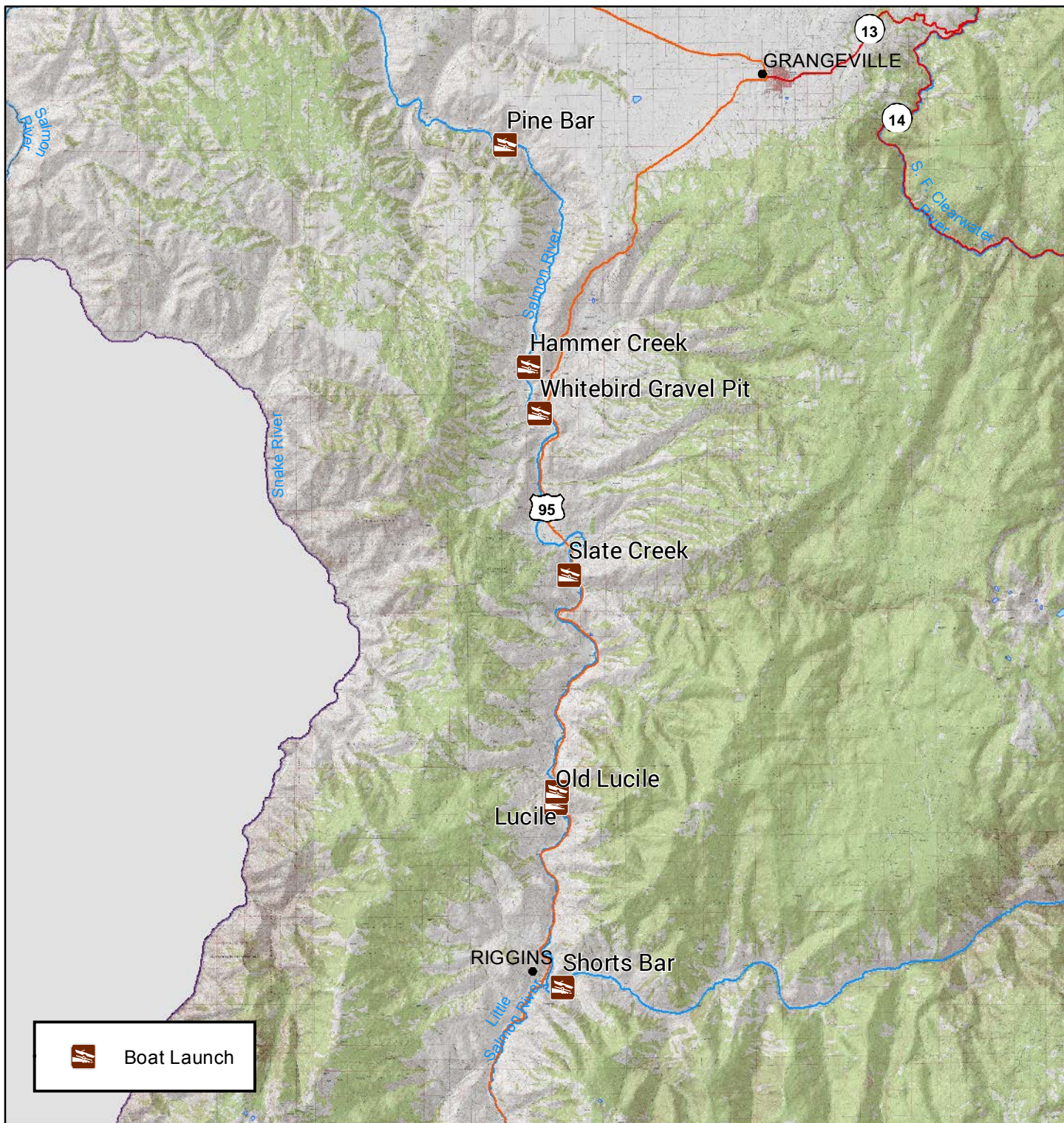
The primary contact for this project is Joe O'Neill, BLM Outdoor Recreation Planner, 1 Butte Drive, Cottonwood, Idaho 83522 (208)962-3683.

### **Attachments**

Map

# BLM Salmon River Boat Ramps

## Cottonwood Field Office - Idaho BLM



Map Created: 7/13/2015

The surface management status ("land ownership") should be used as a general guide only. Official land records, located at the Bureau of Land Management (BLM) and other offices, should be checked for up-to-date information concerning any specific tract of land.

No warranty is made by the Bureau of Land Management. The accuracy, reliability, or completeness of these data for individual use or aggregate use with other data is not guaranteed. The following cannot be made Section 508 compliant. For help with its data or information, please contact the BLM Idaho State Office Webmaster at 208-373-4000.

1:350,000  
0 1.25 2.5 5 7.5 10 Miles  
Map Projection: NAD 1983 UTM Zone 11N

